



VIDA WEST

D O W N T O W N

N E W C A P I T A L



**THE FIRST DIGITAL MALL
IN NEW CAPITAL**



READ MORE

BUSINESS AND INNOVATIVE
VIDA WEST MALL



ONLINE
STORES

VIEW STORES →



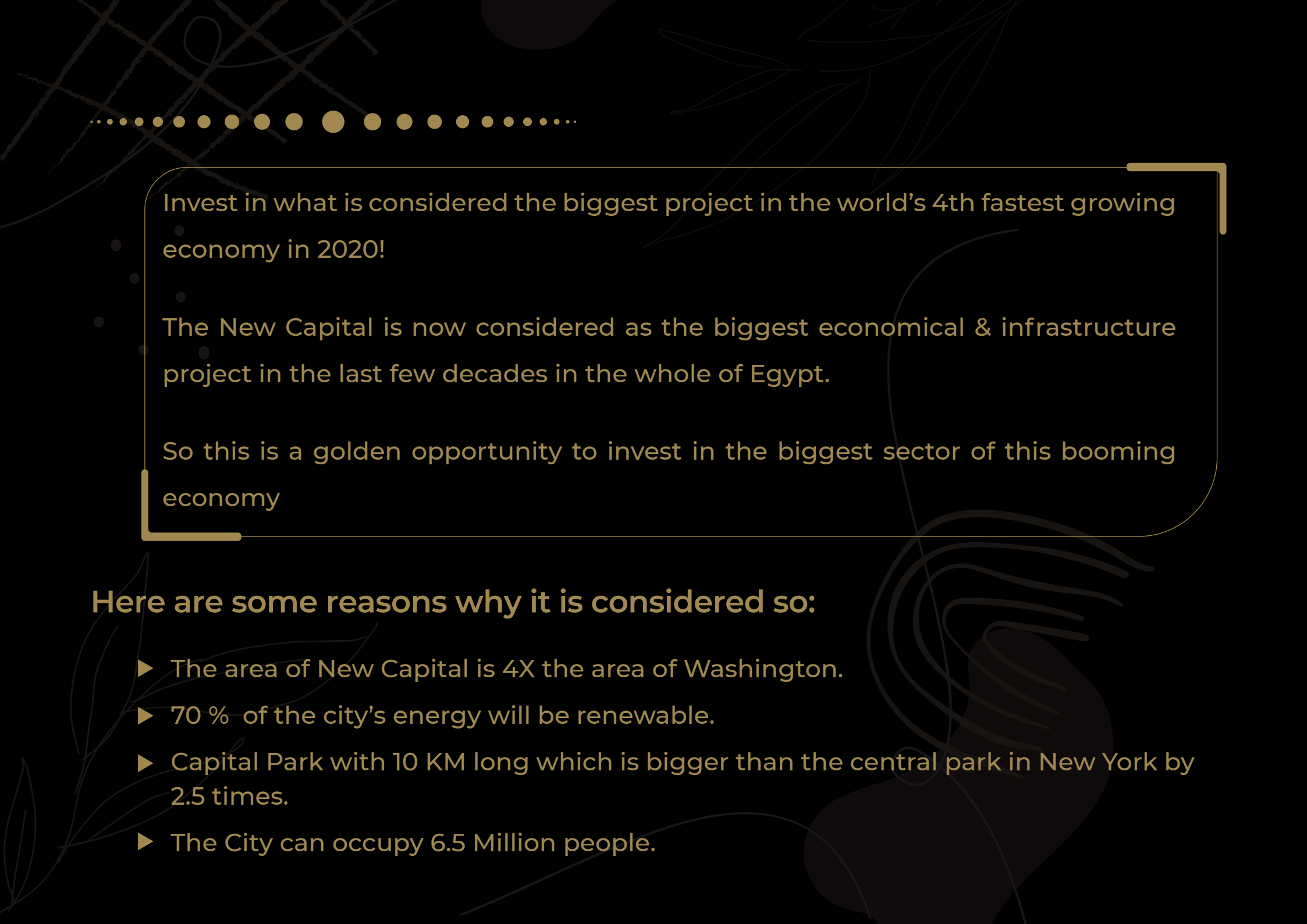
DOCTORS
CLINICS

VIEW DOCTORS →



BUSINESS
COMPANY

READ MORE →



Invest in what is considered the biggest project in the world's 4th fastest growing economy in 2020!

The New Capital is now considered as the biggest economical & infrastructure project in the last few decades in the whole of Egypt.

So this is a golden opportunity to invest in the biggest sector of this booming economy

Here are some reasons why it is considered so:

- ▶ The area of New Capital is 4X the area of Washington.
- ▶ 70 % of the city's energy will be renewable.
- ▶ Capital Park with 10 KM long which is bigger than the central park in New York by 2.5 times.
- ▶ The City can occupy 6.5 Million people.

Why DOWNTOWN ?



- The most premium location at the heart of the new capital on 570,000+ m2.
- The Biggest Commercial and Administrative Area in New Capital.

You will be next to:

- ▶ El Masa Hotel
- ▶ Financial District
- ▶ Governmental District
- ▶ The Presidential Palace
- ▶ The Green River



WHO WE ARE ?

.....



LOCATIONS DEVELOPMENTS

Locations Developments was established to be the kernel between Deyar Masr and Al-Wejhaa to merge more than 10 years of experience in projects all over Egypt, especially in the New Capital.

We aim to create profitable investment opportunities, by providing credibility and unique experience in the commercial sector through our projects, Marvel Mall, VIDA Mall, and next soon projects in the New Capital.



VIDA WEST MALL



VIDA WEST

DOWN TOWN
NEW CAPITAL

whatever you are Investor or business owner, we believe that Vida West Mall will be your ultimate choice in the Down Town! Vida West mall is uniquely designed to be the right place to invest in the downtown. We are developing VIDA West mall based on our values and experience that will help the local and the international businesses to reach their business goals and overcome all challenges



May 2010 - 2010
Loti

Loti

May 2010 - 2010
May 2010 - 2010

Metallic Zucchi Vlain
Allrexx Fashionlogy BlueAnswer

May 2010 - 2010
May 2010 - 2010

guzel Cerrah LOKZZAH
May 2010 - 2010

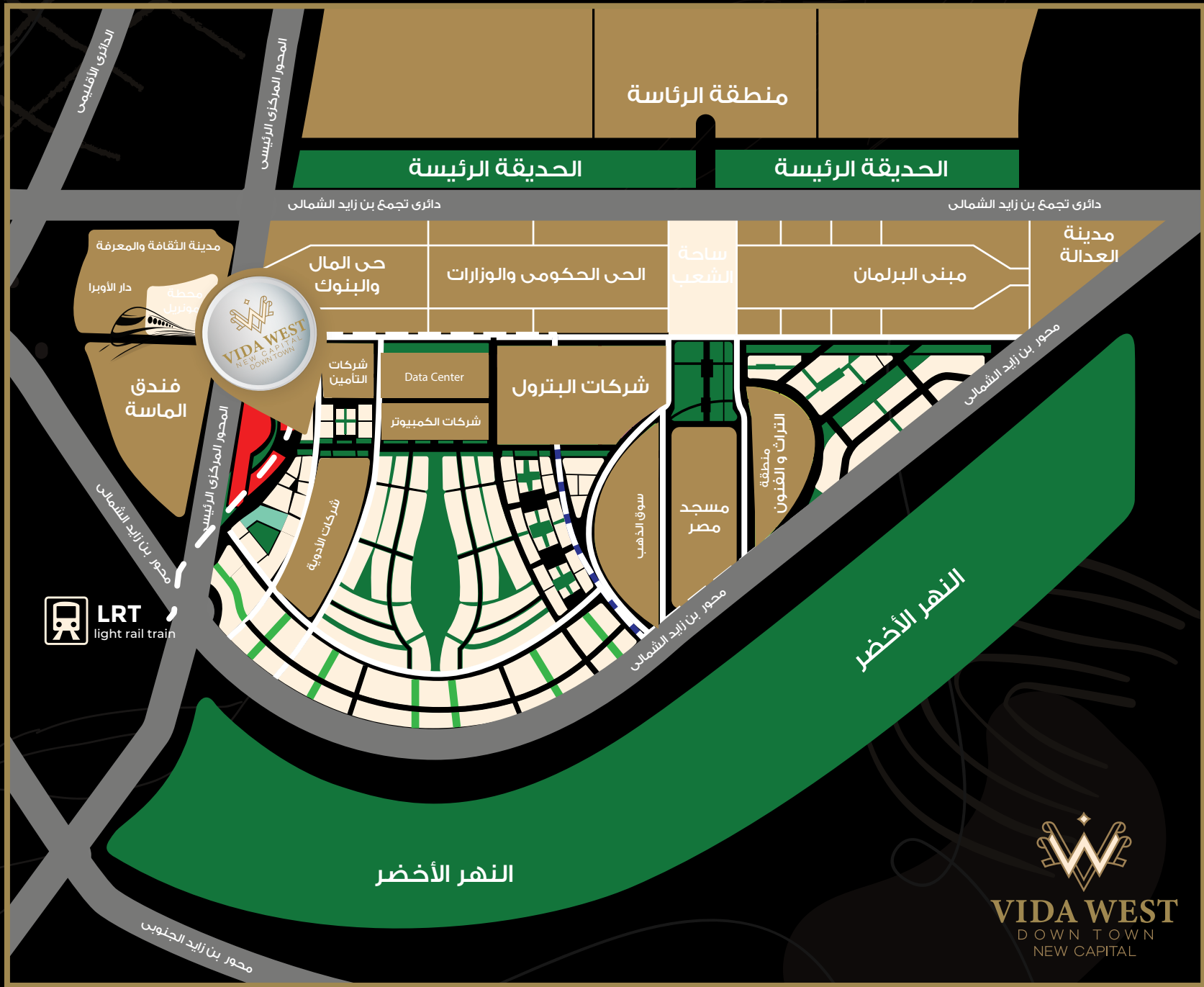


VIDA WEST
DOWN TOWN
NEW CAPITAL



VIDA MALL
DOWN TOWN
NEW CAPITAL





PROJECT FACILITIES



Elevators



Dancing Fountain



Food Court



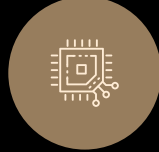
ATM center



Day Care Center



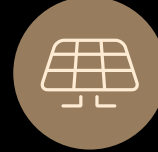
Kids Area



Smart Units



Sky Lounge



Solar Energy



High Speed Internet



24/7 Security System



Operating & Maintenance Company



under ground Parking



Electric Generators



Fire Fighting System

LAND AREA 2260 M²

COMMERCIAL UNITS AREA 29 : 98 M²

HEIGHT G + 8

FOOT PRINT 678 M²

PARKING LOTS 130 Cars

ADMIN & CLINICS UNITS AREA 42 : 69 M²

BUA 6104 M²



COMMERCIAL

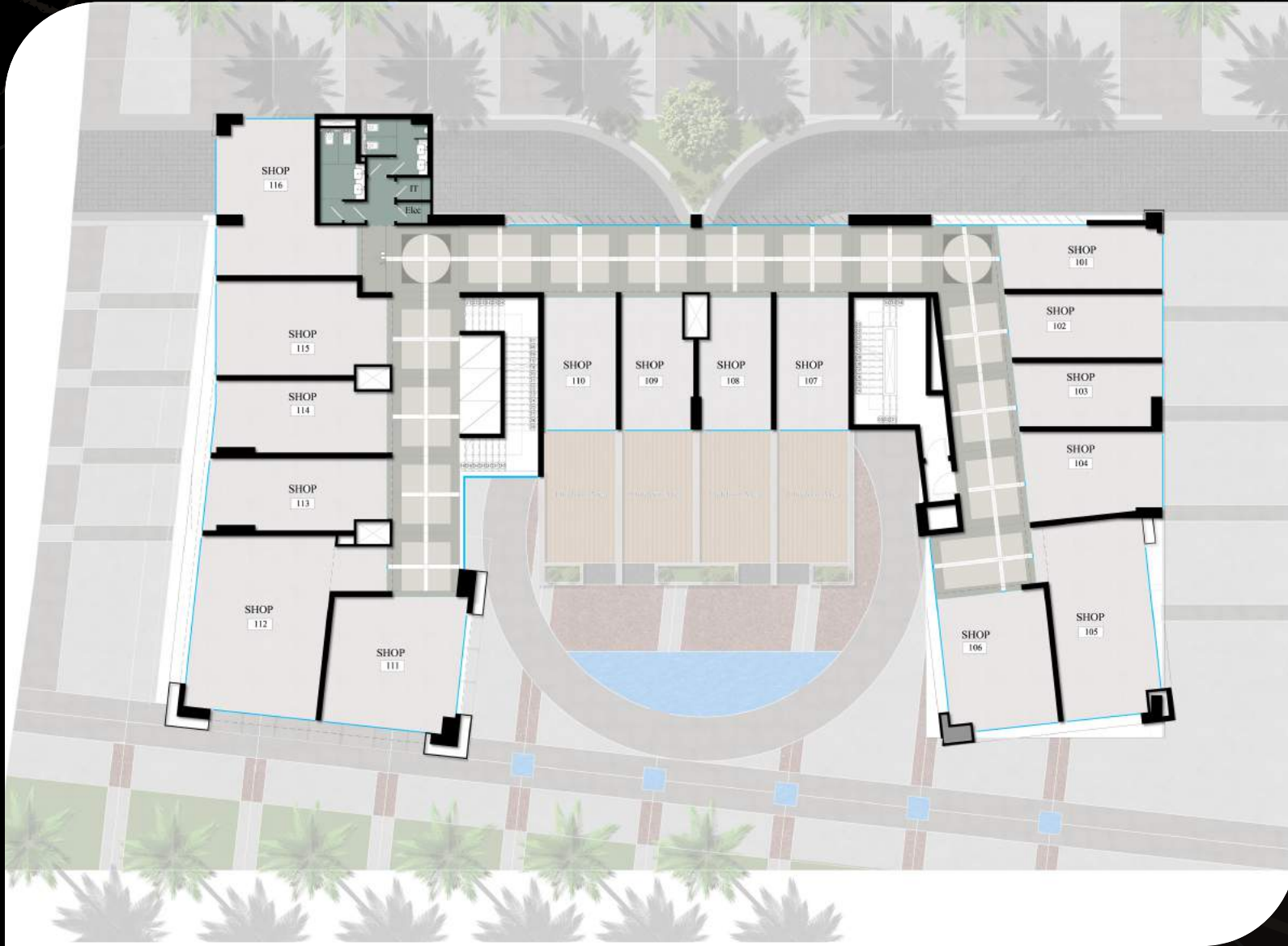




GROUND FLOOR UNITS AREAS

CODE UNIT	AREA	OUTDOOR AREA
G01	60	12
G02-Pharmacy	87	25.45
G03	43	21.13
G04	29	15.73
G05	56	60.23
G06	56	12.89
G07	29	-
G08	29	-
G09	34	19.5
G10	35	19.5
G11	33	19.5
G12	34	19.5
G13	82	16.66
G14	103	86.81
G15	50	16.49
G16	48	16.48
G17	46	16.46
G18	47	16.55

COMMERCIAL



FIRST FLOOR UNITS AREAS

CODE UNIT	TOTAL AREA
F101	33
F102	33
F103	30
F104	38
F105	65
F106	46
F107	32
F108	31
F109	31
F110	32
F111	57
F112	86
F113	43
F114	41
F115	51
F116	57

COMMERCIAL



SECOND FLOOR UNITS AREAS

CODE UNIT	TOTAL AREA
F201	33
F202	33
F203	30
F204	38
F205	65
F206	46
F207	32
F208	31
F209	31
F210	32
F211	57
F212	86
F213	43
F214	41
F215	40
F216	40
F217	46

COMMERCIAL



ADMINISTRATIVE





MEDICAL



THIRD FLOOR UNITS AREAS



CODE UNIT	TOTAL AREA
F301	58
F302	44
F303	52
F304	51
F305	46
F306	46
F307	46
F308	42
F309	59
F310	45
F311	47
F312	46
F313	46
F314	47
F315	69

MEDICAL & ADMINISTRATIVE

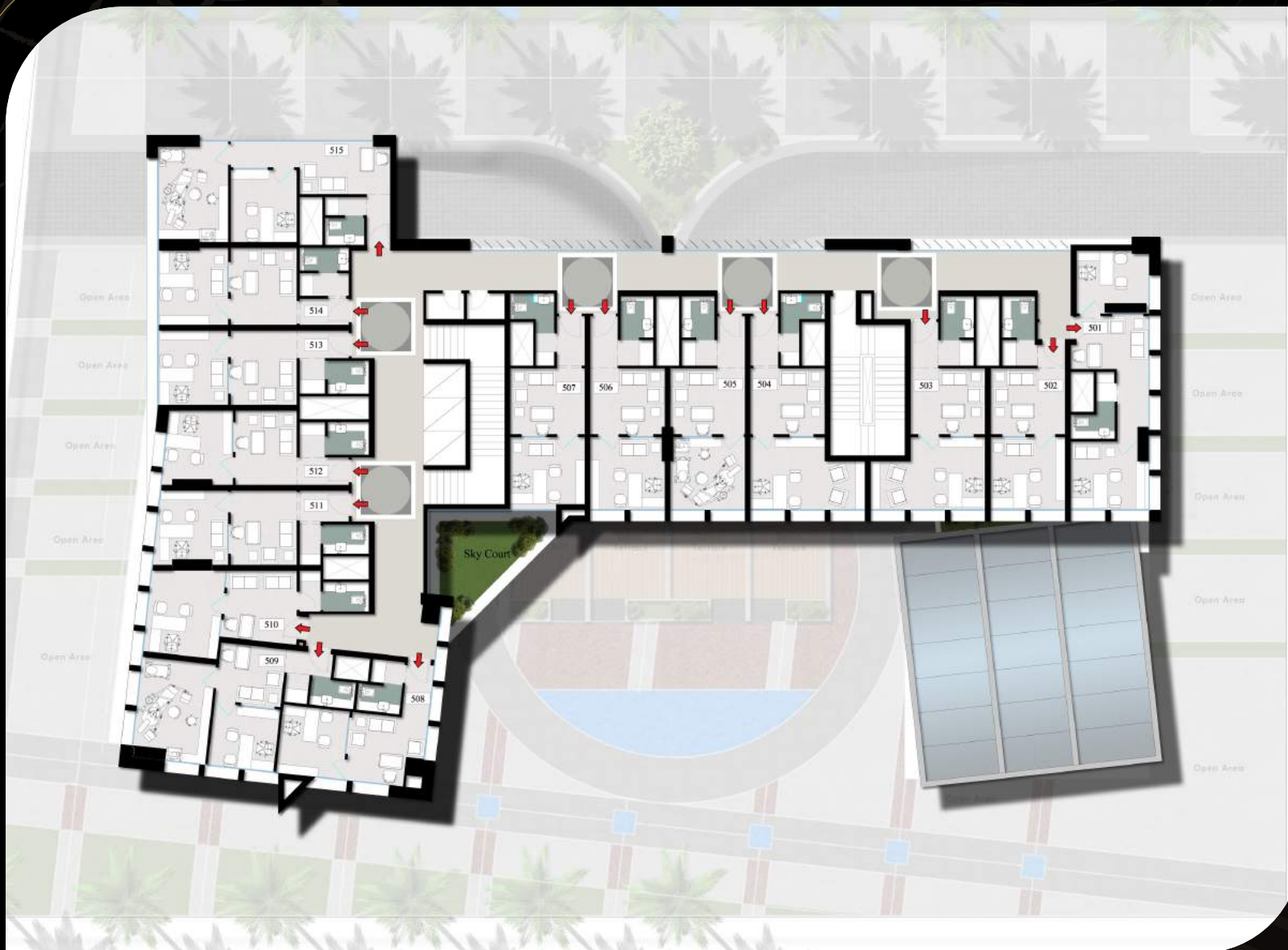
FOURTH FLOOR UNITS AREAS



CODE UNIT	TOTAL AREA
F401	58
F402	44
F403	52
F404	51
F405	46
F406	46
F407	45
F408	42
F409	59
F410	45
F411	47
F412	44
F413	46
F414	47
F415	69

MEDICAL & ADMINISTRATIVE

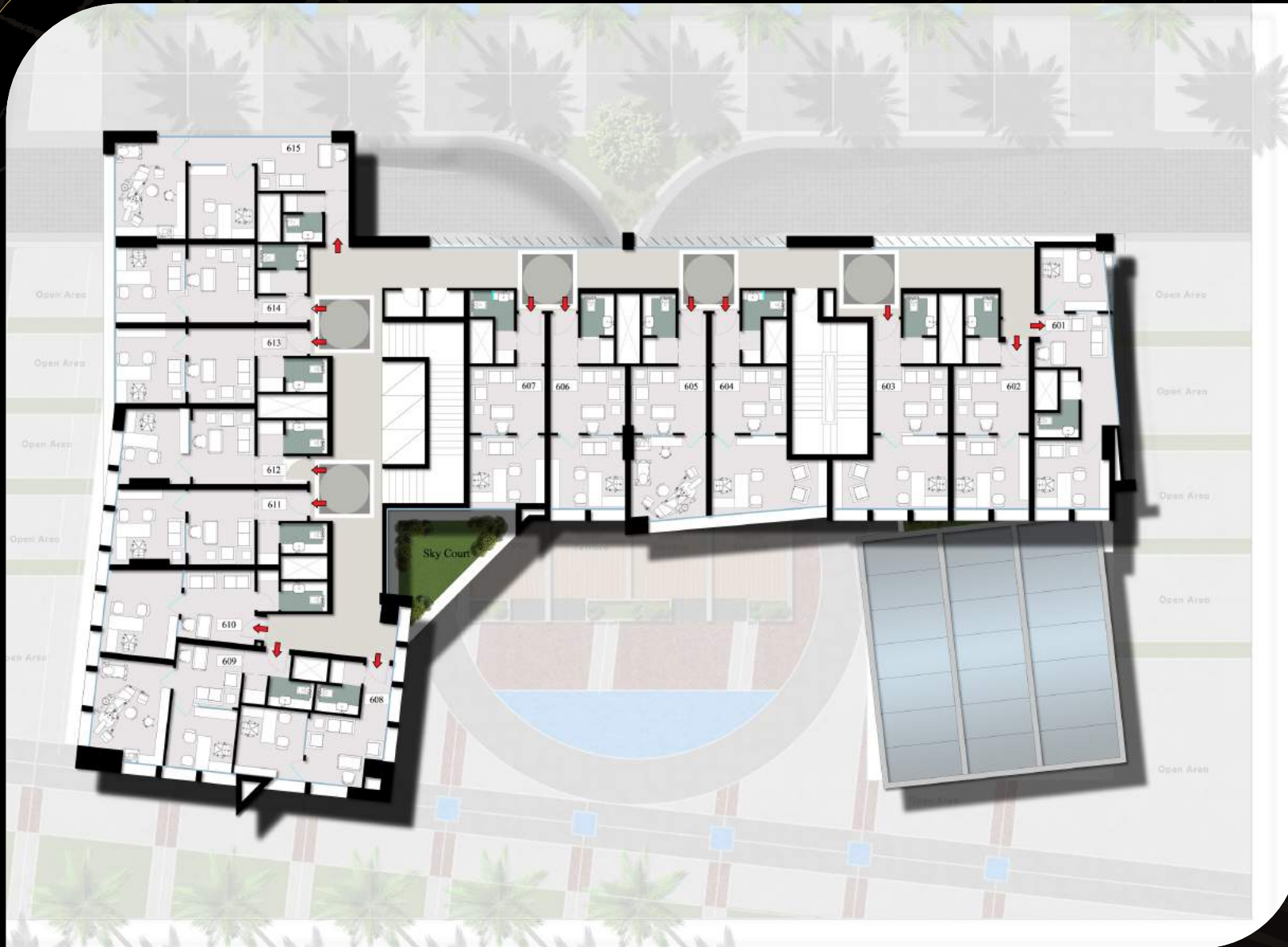
FIFTH FLOOR UNITS AREAS



CODE UNIT	TOTAL AREA
F501	58
F502	44
F503	52
F504	51
F505	46
F506	46
F507	45
F508	42
F509	59
F510	46
F511	47
F512	44
F513	46
F514	47
F515	69

MEDICAL & ADMINISTRATIVE

SIXTH FLOOR UNITS AREAS



CODE UNIT	TOTAL AREA
F601	56
F602	44
F603	52
F604	52
F605	49
F606	46
F607	45
F608	42
F609	59
F610	45
F611	47
F612	44
F613	46
F614	47
F615	69

MEDICAL & ADMINISTRATIVE

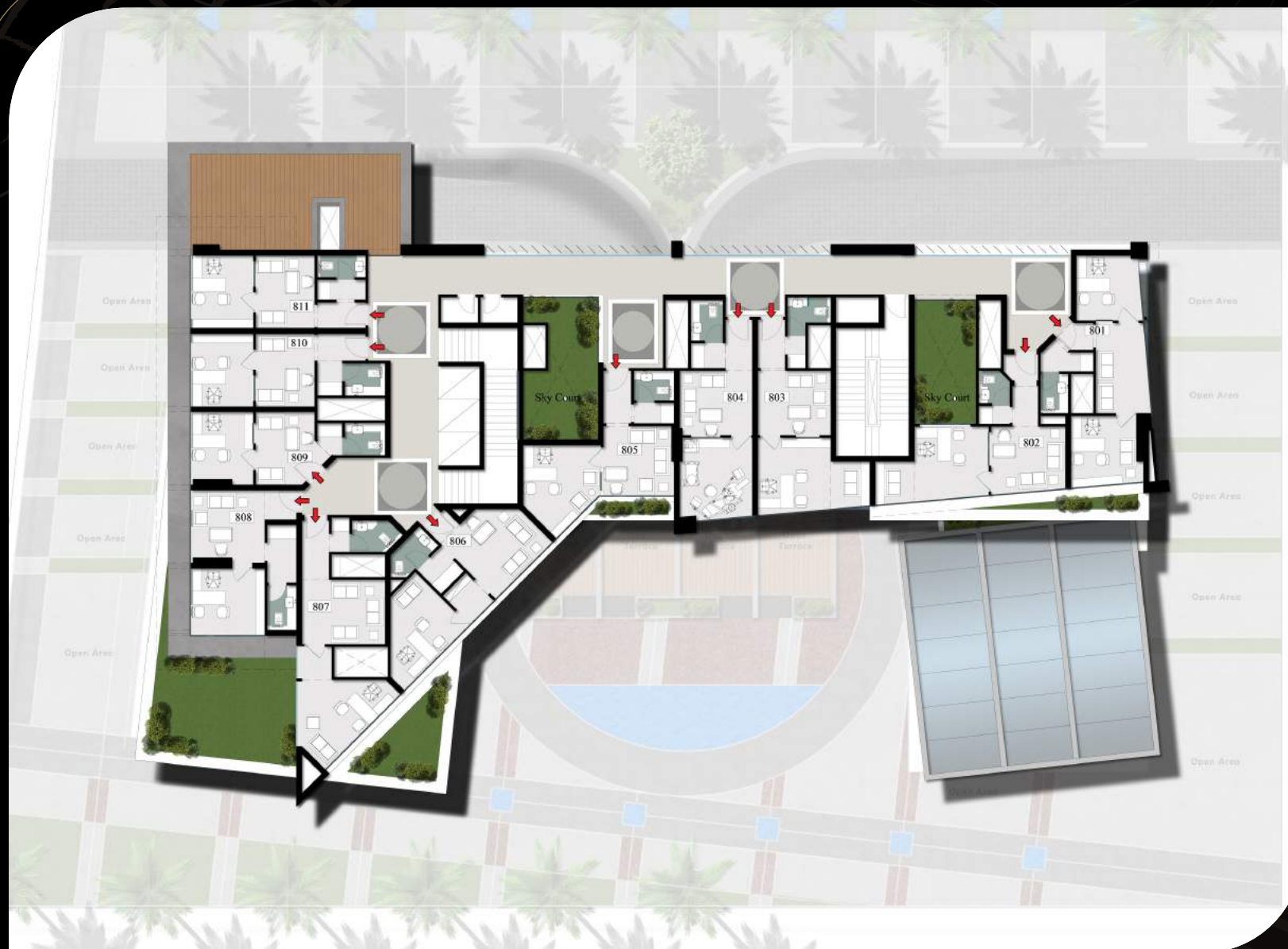
SEVENTH FLOOR UNITS AREAS



CODE UNIT	TOTAL AREA
F701	56
F702	44
F703	52
F704	52
F705	49
F706	46
F707	45
F708	42
F709	59
F710	45
F711	47
F712	44
F713	46
F714	47
F715	69

MEDICAL & ADMINISTRATIVE

EIGHTH FLOOR UNITS AREAS



CODE UNIT	TOTAL AREA
F801	58
F802	52
F803	52
F804	49
F805	49
F806	54
F807	54
F808	50
F809	38
F810	43
F811	43

MEDICAL & ADMINISTRATIVE